


SHOP FLOOR DATA COLLECTION PACKAGE

Installation, training and use

As the competitive environment becomes tougher, companies must respond more and more quickly to unexpected situations, both inside and outside the company. This makes up-to-date and transparent information from production all the more important, especially for medium-sized businesses.

Your introductory package

Because production-related data is very important to medium-sized companies, we offer the ideal introductory package at a fixed price for these businesses. Such data includes:

- Actual times
- Disturbances and reasons
- Goods quantities and rejection quantities, etc.

In addition to software, our package includes implementation support and key user training.

Sample package:

- License for Master SFDC
- License for Operator SFDC (terminal software)
- Installation and training

24.500,- € Package price

Functions at a glance

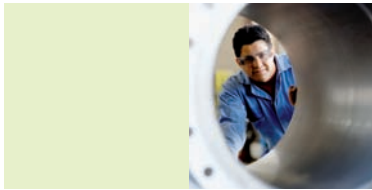
Adicom® Shop Floor Data Collection (SFDC) consists of a Master SFDC and an Operator SFDC control center.

Master SFDC

- Master data management
- Graphical planning chart based on real-time production data
- Manage production orders
- Display the actual situation and master list
- Assign and release production orders
- Correct SFDC messages
- Online integration to enable exchange of production orders and message corrections between SAP and Adicom

Operator SFDC

- Display order data at the terminal
- Start, interrupt, (partially) confirm orders/operations
- Setup start/end
- Start/end of disturbance/interruption
- Open/close overhead orders
- Online integration to enable transfer of SFDC confirmations to SAP



Your advantage

- No need for time-consuming manual data entry
- Local entry and processing of shop floor data captured during production
- Shorter processing times thanks to up-to-date production data
- Increased machine capacity thanks to real-time confirmations
- Virtually paper-free production
- Comprehensive process integration between ERP system and production

Optional upgrades

- Kaba Benzing SFDC terminal 95 80, 3.980,00 €
- License for Master SFDC, 5 User-package 2.950,00 €
- License for Operator SFDC, 5 User-package 1.250,00 €

The following modules of the Adicom Software Suite can also help you optimize your internal production and human resources processes:

For production:

- Machine Data Capture (MDC)
- Traceability
- JIT/JIS

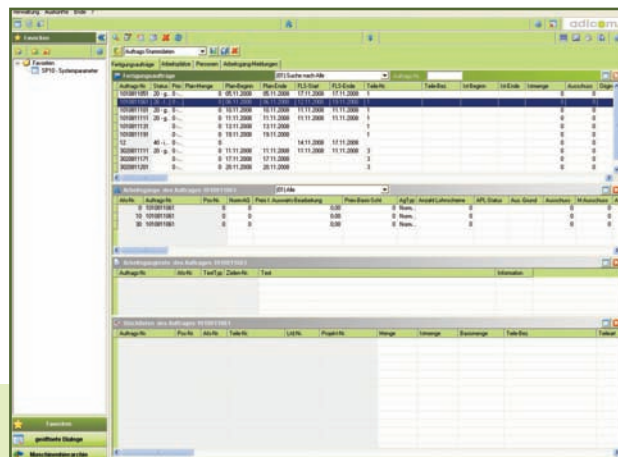
For human resources:

- Personnel Time Recording (PTR)
- Personnel Time and Attendance (PTA)
- Access Control (AC)
- Personnel Scheduling (PS)
- Graphical Pegboard (GPB)



"At Roegelberg we employ the Machine Data Collection, Shop Floor Data Collection and Advanced Planning & Scheduling modules of the Adicom® Software Suite. They enabled us to significantly reduce data collection and reaction times, resulting in improved delivery reliability. The Adicom® Software Suite perfectly accommodates our goals of becoming more flexible and providing better customer service. We definitely chose the right MES system!"

Rögelberg Getriebe GmbH & Co. KG
Hermann Pleus, IT Administration;
Hermann Walters, Managing Director



Kaba SFDC terminal B-Net 95 80

www.adicom.com
info@adicom.com
Fon: +49 (0)62 01 80 80 00