



adicom.  
FOR TRACEABILITY



# ADICOM FOR TRACEABILITY ENSURES A COMPETITIVE ADVANTAGE

Functioning traceability acts both as a quality feature and a competitive advantage. Liability and warranty claims stipulated by the tightened law on product liability can only be avoided if error sources are located exactly and can be traced back all the way to the supplier: this saves costs and image-ruining recalls.

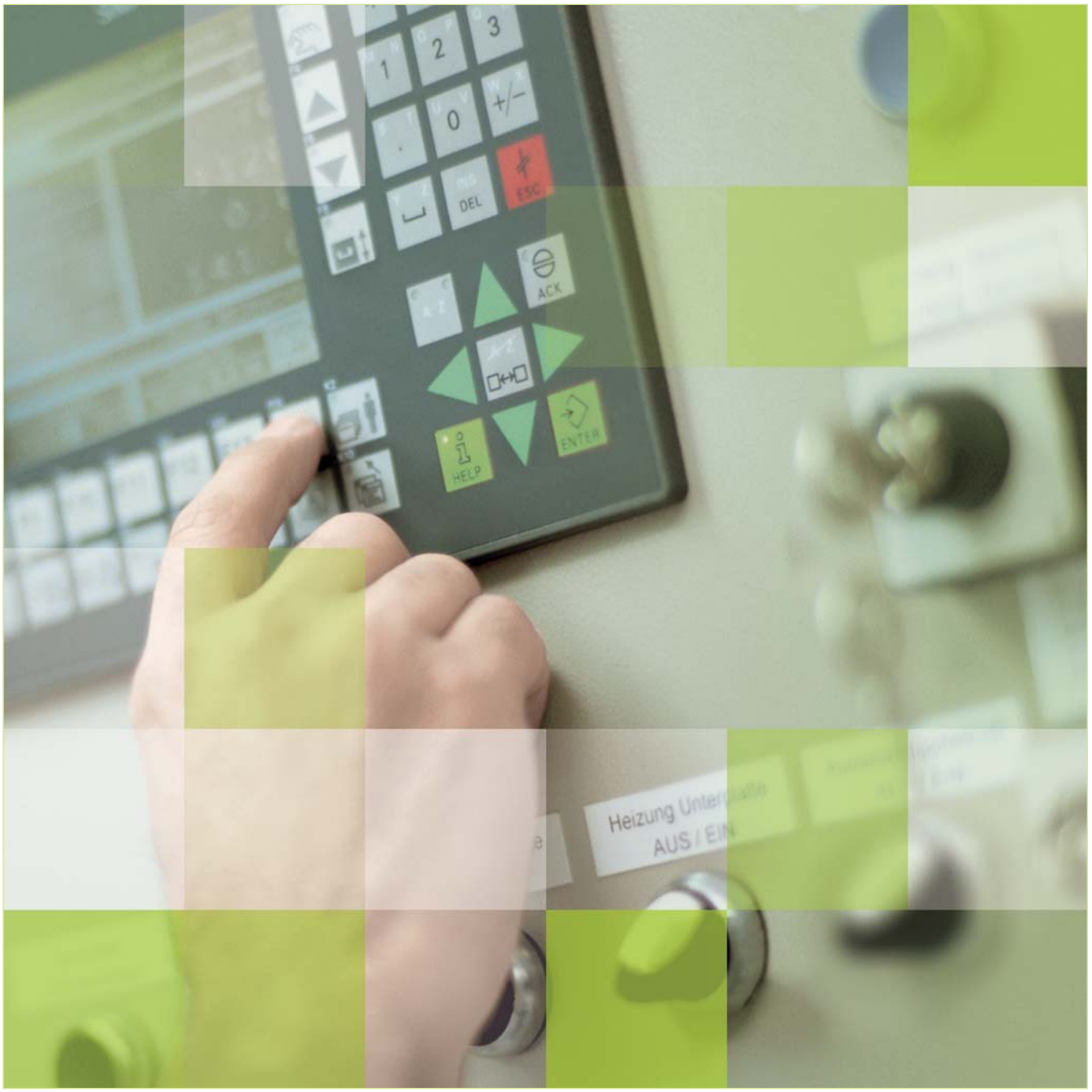
The identification and traceability of products, however, requires ongoing access to and availability of production and shipping data over a specific production period. It must be ensured that the necessary data for this traceability is completely acquired, collected, and archived, and that it can be evaluated and queried.

## Good to know....

...which parts were used in which products, when, where, and under what production conditions, and where were they shipped? Whose machine produced which parts and when? Who inspected the product and what quality data was used? Which raw materials were received from which shipments?

Adicom® for Traceability can answer all of these questions.





Heizung Unterplatte  
AUS / EIN

### **Adicom for Traceability has experience in your industry**

Adicom for Traceability is a shop floor system with integration to your higher-level ERP system (for example SAP ERP), and to the underlying production and manufacturing systems.

Therefore Adicom for Traceability can be easily integrated and adapted into your specific system and production environment.



### **Additional core functions**

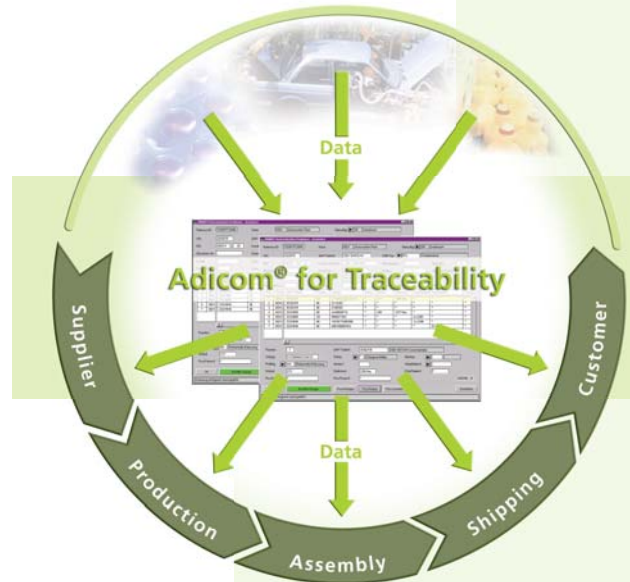
- Support of delivery batches/part document batches
- Input/output batches
- Synergies with external systems: assembly equipment, scales, test cells, robots, mobile data collection, transponders, camera systems ...
- Label management, barcode labels, pick lists, accompanying documents
- Support of material logistics and stock maintenance from receiving to shipping



- Use in just-in-time/just-in-sequence plants (Adicom for JIT/JIS Automotive, High Availability System, Mission Critical Environment)
- Configurable mapping of specific production processes

#### Your advantages

- If products with defective components are produced, Adicom for Traceability allows you to selectively identify and rework all affected products.
- Products already sold can be identified and recalled.



### ...Additional strenghts

The data required for traceability is often combined from different systems into a logical chain. But frequently not all of the required data is recorded innately. There are gaps in the logical chain. The task of Adicom Shop Floor Data Collection (SFDC) and Machine Data Collection (MDC) is to close these gaps.

With the Adicom SFDC and Adicom MDC solutions, plant and machine data can be collected from the most diverse production and process chains. This allows a seamless traceability of your production, process, and quality data.



#### **TRW**

Dr. Ingo Thiem,  
Plant Technical Manager;  
Carsten Zehnich, Head of IT



*"We are gaining more transparency in production and we are increasing our quality of inventory through the use of the Adicom® Software Suite. The outcome is that we can assure our customers deliveries on schedule and on-time."*



We would be glad to demonstrate our industry expertise to you.

Please contact us – we're looking forward to hearing from you.

[www.adicom.com](http://www.adicom.com)

[info@adicom.com](mailto:info@adicom.com)

Fon: +49 (0)62 01 80 80 00