



ONLINE TRACKING SYSTEM (OTS)

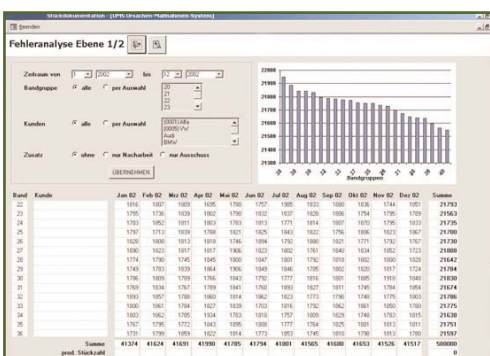
This is the situation in many organizations today: all too often, faults and errors that occur during assembly and production are entered manually in inspection charts via tally sheets for every machine and for the final inspection. Not only are these incomplete (since many faults are not even entered in the first place), but their value is limited due to the difficulty in analyzing them and the lack of possibilities for consolidating the data. The result is that major faults are difficult to spot, and that they are often not identified in time. You can increase your productivity with the Adicom® Online Tracking System (OTS).

The objective – more transparency in production and controlling

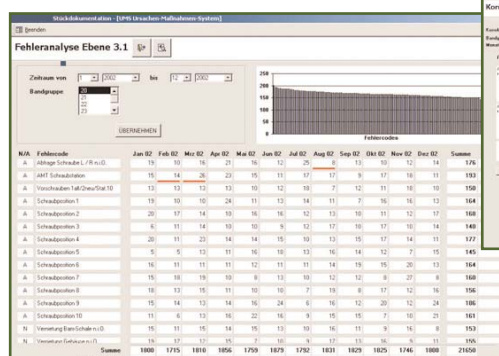
Driven by the objective of significantly reducing the number of faults and malfunctions in production and assembly, work began on the development of a cause/response system that would be able to increase transparency in production control and management. Fault data is automatically transferred from the machine control systems or the line PCs. Manual input is now only required for faults that cannot be logged using the control system technology – for example, visual defects.

Production control and the technicians identify and enter the fault causes and the corrective measures to be taken. As a result, fault and malfunction data can be displayed in different ways and in varying levels of detail, while the effectiveness of corrective measures can be tracked.

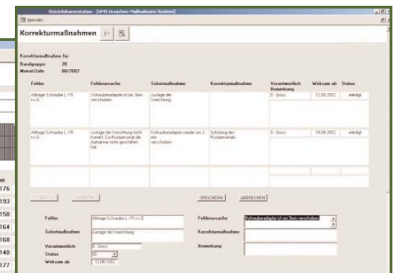
Data consolidation leads to supplier problems being detected more easily. Suppliers can therefore be integrated into the process from an early stage, and to a greater extent.



Overview of all faults, all production (all assembly lines) over a period of 12 months. Initial fault analysis is achieved by varying the data selection. Key figures are calculated based on finished quantity and fault rates that have occurred.



Overview of all faults per assembly line over 12 months. In the overview, the fault rate per fault characteristic is underlined in red to show remedial measures (effectiveness testing). Double-click on the red underlined text to bring up a separate view showing all remedial actions.





Your benefit

- Significantly improved production line performance level, and considerably increased productivity
- The availability of online data and the online detection of major faults means that cause analysis and the introduction of remedial errors can be initiated immediately – long before the products in question can further advance in the manufacturing process
- Data entered once can be used many times – for technical analysis, short-term assessments of the current production process, long-term assessments of remedial measures, and product quality monitoring
- Provision of consolidated data as key performance indicators
- All evaluations are available as automatically generated, standard quality charts
- Integration from fault detection to causes, to the derived measures and their effectiveness
- A clear competitive advantage of a convincing presentation of production quality to the client

There are several levels to the data structure, and each level can display various degrees of data reduction. Data reduction goes from Level 1 (highest degree of reduction, a 12-month window, all assembly facilities included in the overview) to Level 6 (lowest degree of reduction, an 8-hour window, one assembly line).

